

featured project **BOLTON MANOR HOLSTEINS LTD.**

Thomas and Wendi Jackson operate their 260-head dairy farm north of Thamesford with four full time staff members. The Jacksons have three children, Emma, Tommy and Robbie. Emma graduated from the University of Guelph in Kinesiology and is currently studying Respiratory Therapy at Fanshawe College. Tommy is working at the City of Woodstock after graduating with a degree in Environmental Engineering from the University of Guelph. Robbie is in his second year at Ridgetown College where he is pursuing a diploma in Agriculture Studies.

Thomas immigrated from England in 1981 with his parents and sisters to a 50-head tie-stall farm with 300 acres, where his father was focused on Holstein pedigree cows. After Thomas graduated with a diploma in agriculture in 1985, the family purchased a neighbouring 100 acre farm with 60 cows and a D-4 herringbone Surge parlour. This is where Thomas developed his interest in the dairy business. Thomas and Wendi married in 1992 and started their family. They expanded their freestall barn and parlour in 2000 to accommodate their father's tie-stall cows, allowing Tom Sr. to retire.

Land purchases, acquiring quota, renovations and expansions became the focus for the next fifteen years while milking cows in the D-8 parlour. In 2016, the Jacksons built a new dairy with 300-stalls, a dry cow pack area, special needs pen and a D-20 DLS/GEA parallel rapid exit parlour. The barn features include Jourdain stabling, sand bedding, ACME panel fans, a sprinkler system over the headlocks, GEA scrapers, and a Biolynt flush system for the holding area and parlour. **Article continues on page 4**



We're Social Too



Tradeshow Season
dairylane.ca/tradeshows

DLS Is Hiring
dairylane.ca/careers



CONGRATULATIONS EXCELSIOR FARMS!



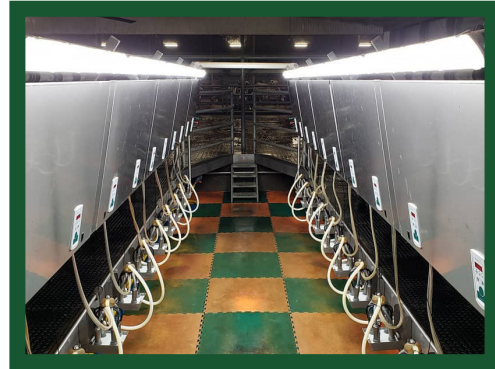
Andrew Deelstra
@adeelstra96 • 04 Nov

November 4, 2009 vs. November 4, 2019

Today marked the 10th Anniversary of our first milking in "the new barn!" @dairylanesystems



INSTALL DAY
November 4, 2009



10 YEARS LATER
November 4, 2019

EMPLOYEE SPOTLIGHT



Deaghan Thompson
Construction Labourer
Joined DLS May 2019

Deaghan is the first female to join the Structures team as a Construction Labourer.

Deaghan attended Algonquin College in the Carpentry and Renovation Techniques program. Steel structures were something she had never worked on before, but she has proved to be a quick learner and has adapted well. Deaghan worked at Home Depot in the Lumber and Building Materials department prior to working at DLS; she also did drywall and custom carpentry projects on the side.

Deaghan's interest in trades was sparked while attending H.B. Beal high school where she took numerous trade courses which led her to Algonquin College.

When she's not working, she has a keen interest in sports and enjoys playing volleyball and rugby. She is an avid outdoor girl: fishing, boating, hiking and camping – anything outdoors is her thing. She is also working on upgrading her truck!

Deaghan hopes to continue to grow and learn with DLS. She is thoroughly enjoying all the new skills she is learning, along with the great experiences she is gaining.

NOVEMBER'S product of the month

Are you looking for a more consistent way to feed calves without the ongoing costs of milk replacer? Pasteurizing is an option worth considering!

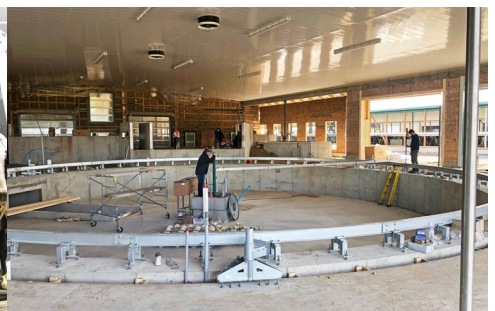
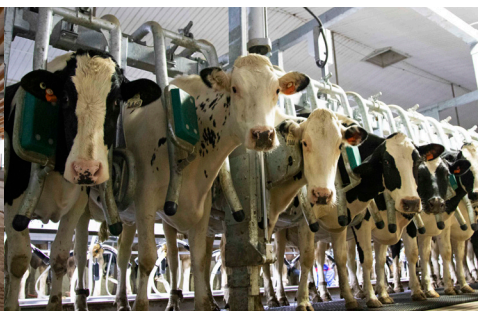
According to a clinical trial of 438 calves published in the Journal of the American Veterinary Medical Association, researchers compared feeding non-saleable pasteurized milk versus milk replacer. The results suggest that dairy calves fed pasteurized non-saleable milk have a higher growth rate and lower morbidity and mortality rates than do calves fed conventional milk replacer! The estimated savings of feeding pasteurized non-saleable milk,

compared with milk replacer, was \$0.69/calf per day. View the study @ go.dairylane.ca/avmajournal.

Westward pasteurizers are built for quality. They include fully automated PLC controls, heavy duty stainless steel construction, and sizes ranging from 20 to 800 gallons to suit any dairy size. Westward bottle washers are also a good complimentary product that can be both integrated with the pasteurizer or a stand-alone unit.



JOB PROGRESSION HIGHLIGHTS



1

Terpstra Farms
Brussels, ON

Cross ventilation and rotary projects are getting to be quite popular! Terpstra Farms will be our fourth cross ventilated DLS Structure in the past year. Three of the four are accompanied with a rotary. All four barns will also be manually scraped.

2

Scherpenzeel Farms
Ingersoll, ON

The Scherpenzeel family previously milked with a D-10 herringbone parlour. Recently they transitioned to a D-16 parallel parlour. They bought used GEA components with new DLS cabinets and stalls. The holding area and return lanes were expanded.

3

Orion Holsteins
Ayr, ON

Orion Holsteins will transition from a D-20 herringbone parlour to a 60 stall GEA rotary this winter. The rotary will be stainless steel. A barn addition is also in progress.



featured project **BOLTON MANOR HOLSTEINS LTD.**

Article continued from page 1

The Jacksons currently own 800 acres around the main dairy farm and operate their own line of equipment. They provide custom chopping to a neighbour who does their combining. They have been a closed herd for fifteen years, and they now breed AI to sexed semen and beef breeds. They currently raise bulls in a renovated heifer barn, and the heifers are raised in the old dairy barn. The calves have been moved from hutches into a renovated section of the former dairy barn with two GEA robots where they are fed pasteurized whole milk, pasteurized with a Westwaard pasteurizer.

With challenges acquiring dairy quota, the Jacksons explored the option of diversifying their operation to include an on-farm digester, believing it would be a good addition to the dairy. In 2014, they applied for a FIT contract for a 250 Kw on-farm digester. They learned they were successful in their application in 2016—just as they were beginning their new barn build!

The digester project began building in 2018 and was commissioned in September 2019. The biogas plant currently takes on-farm waste, feed and manure as well as off-farm waste to produce hydro to the grid. The biogas plant features a 30m diameter tank complete with 3 DLS agitation mixing nozzles, a 250 kw CHP, a pumping building, a DLS solids feeder, two DLS low temperature pasteurization tanks and a C-deg waste gas burner.



FEATURED TWEET



Gerrit's Ag Service LTD
@gerritsag • 2 Oct

Installed some EasySwing cow brushes today, the cows quickly figured them out!
@dairylanesystem



6403 Egremont Dr.
Komoka, ON
N0L 1R0

(519) 666-1404
info@dairylane.ca
www.dairylane.ca

