

featured project **LAAGERF HOLSTEINS**

Kees and Bianca den Hertog both grew up working on their respective family's dairy farm. Bianca's parents, Dirk and Betty Willemsen moved to Canada from Holland on May 12, 1983, and on February 23, 2000, Kees's parents, Marien and Margriet den Hertog moved to Canada. In 2009, Bianca began to work for Kees's parent's farm, den Hertog Dairy Farms, while continuing to work at her parent's farm, DBW Dairy Farms. Before meeting Kees, Bianca had always wanted to take over her parent's farm. However, after getting married in 2011 and starting to think about a family, Bianca realized she could no longer balance working at both farms. She decided to focus all of her energy into den Hertog Dairy Farms in 2012. Kees and Bianca have 3 children, Bridget 6, Kaleb 4 and Kace 2.

Since 2011, they have been growing their cash crop and custom work operation, Winmaple Farms Ltd., where they provide services such as tillage, planting and forage harvesting. In 2018, they took over den Hertog Dairy Farms Ltd., milking 275 cows. Also, in the summer of 2018, they had the opportunity to take over Bianca's parents herd, which was registered under the prefix "Laagerf". Laagerf originates from the road name of the farm that Bianca's Dad grew up on in Holland, and to this day, the farm is still owned by their extended family. It was a very special opportunity for Bianca to take over her parent's herd. In reflecting on this, she says, "I knew there was sentimental value in the Laagerf name to my parents, and it also holds happy memories for me. I always loved going to Holland to visit my Oma on the farm, knowing our prefix was named after that street. These memories are the real reason I named the farm Laagerf Holsteins. I wanted to show my parents I am so humbled to be able to carry on the Laagerf herd and the memories and meaning behind it."

On April 1, 2020, they moved the cows from DBW Dairy Farms to their new home, Laagerf Holsteins, located across the road from den Hertog Dairy Farms Ltd. "My parents had a Lely robot, and the transition to...[Article continues on page 4](#)



We're Social Too



Tradeshow Season
dairylane.ca/tradeshows

DLS Is Hiring
dairylane.ca/careers

COVID-19 & WEARING A MASK

Wearing masks in public has been a topic of discussion as we continue the battle with the COVID-19 pandemic. Initially, public officials, including the WHO and CDC, deemed that wearing a mask had no benefit. However, as time transpired and we experienced more COVID-19 cases and data, the stance on wearing a mask evolved. Certain regions in North America and certain stores have even made it a requirement.

Evidence that asymptomatic individuals can spread the virus has led to the increased promotion of wearing masks in public. This evidence suggests wearing masks in public is especially important to decrease the risk of spreading the disease to the elderly and others who may be more vulnerable. It is also important to note that wearing masks is not a substitute for social/physical distancing.

One problem with promoting everyone wearing masks is the shortage of supply and the need to conserve the inventory for our front line workers. This problem has led to much creativity with the solution of cloth masks. The CDC has an insightful guide on how to make and use cloth masks. Check it out @ go.dairylane.ca/CDCclothmasks



EMPLOYEE SPOTLIGHT



John Mulder
*Dairy Equipment
Installation Manager*
Joined DLS May 2011



As of this month, John has been with DLS for 9 years! When he started with DLS, he performed installation and service work. Through the years, John has grown and evolved into his current position in which he oversees the installation of new milking parlours. John always ensures the work is completed efficiently and meets DLS standards!

Before joining DLS, John worked for Norwell Dairy for about 6 years doing installations and service, and he also oversaw certain jobs. At Norwell, he was able to gain some excellent skills and experience preparing him for his future here. Before Norwell, John had his first start in the dairy business constructing agricultural facilities.

In addition to his work experience, John has taken welding and electrical courses through Fanshawe College to add to his list of skills and knowledge. We're grateful for his broad scope of abilities!

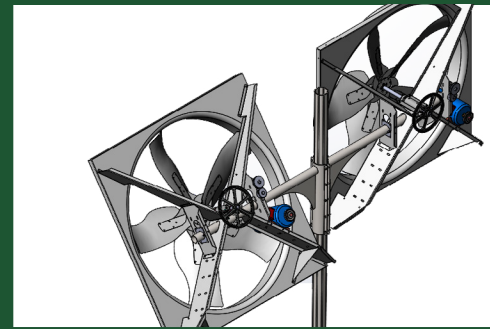
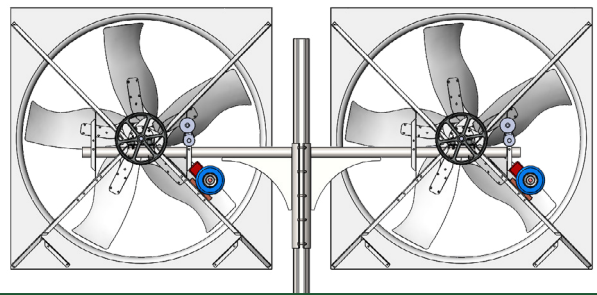
John is an avid sports guy—it doesn't matter what the sport is he is interested in it! He likes to spend time doing small projects at home and enjoys time with his wife, Joleen, and their 3 great kids. Summertime is always filled with fun at the cottage with extended family boating, tubing, and many other activities!

John enjoys working with his team, organizing the jobs, ordering the material and communicating with the DLS team and customers. He looks forward to the many new projects coming up and making sure our customers receive the best possible service he and his team can provide!

MAY'S product of the month

ACME is a world leader in the design, manufacturing, and distribution of fans, blowers, and ventilation equipment. ACME's manufacturing facility in Oklahoma is over 350,000 square feet and is equipped with modern computer-assisted machinery and automated tooling. The ACME fan line is completely manufactured in the USA.

The ACME 54" 5-blade panel fan is designed to work well in free stall areas and areas that need extra airflow. They feature an energy-efficient enclosed motor, and they are very quiet. The fan has a 24,400 CFM rating. All the components are made in the USA, and ACME offers a 5-year bearing and shaft warranty. DLS offers several mounting options to suit different applications.



JOB PROGRESSION HIGHLIGHTS



1 Maplekeys Farm Aylmer, ON

Over 20 years ago we installed a new GEA parlour at this farm, and it is still going strong! We recently switched out the original parlour fronts with a new DLS parlour front. The transition took place in between the morning and afternoon milking.

2 Littlerock Holsteins Aylmer, ON

The Bowen family at Littlerock Holsteins started up their new GEA R9500 just over a month ago! They say they couldn't be happier with how well it has gone and how smoothly the cows have transitioned to the robot. The robot was installed in their existing barn.

3 Van Nuland Holsteins Monkton, ON (Second Location)

Lots of renovation work has been performed at this second farm. The parlour and holding area were upgraded to meet current specifications and to improve cow flow, and the barn was transitioned to sand along with some stabling upgrades.

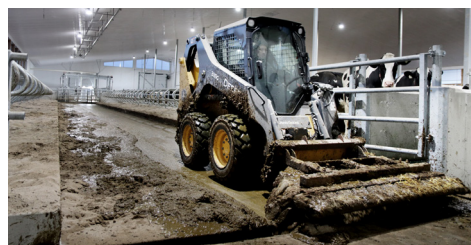


featured project **LAAGERF HOLSTEINS**

continued from page 1

the DLS parlour was a lot smoother than we anticipated". They milk 70 cows in this barn, and there is also a pack area for dry cows and heifers. The parlour is a DLS/GEA D-8 parallel parlour with vertical lift and individual indexing. In the barn, the key features include Jourdain headlocks and stabling with two rows of stalls on the parlour side. There is a combination of DLS tip troughs and Ritchie drinkers. Manure is skid steer scraped with a cross gutter transferring the manure to the pit.

"Kees and I have a true passion for dairy farming, and we strive to grow in this industry continually." (Bianca)



FEATURED TWEET



Kees den Hertog
@WinmapleHlsts

Got the ladies moved in the new barn today, milking went pretty sweet in our new parlour @dairylanesystem @jeffsteckle



6403 Egremont Dr.
Komoka, ON
N0L 1R0

(519) 666-1404
info@dairylane.ca
www.dairylane.ca

