

## featured project **SANDY PEAKS / SLITS DAIRY**

Pedro and Jolanda Slits immigrated from Holland to Canada in May 1999, along with their children Linda (9), Bianca (6) and Jeroen (3). Upon arrival to their new home, the Slits family started building a dairy barn in July 1999, and they were milking by November 1999. At the time, the milking parlour was the newest WestfaliaSurge model available, a D-10 herringbone with rapid exit. The Slits family had one of the first ones installed in Ontario. WestfaliaSurge had a photo shoot done and used the parlour pictures for the WestfaliaSurge Magnum 40 sales brochure.

Over time, the Slits family has had two barn additions on their original barn. Two of the children, Bianca and Jeroen have expressed their desire to take part in the family business as dairy farmers. With this in mind, a decision was made in 2018 to build a new dairy barn (Sandy Peaks Dairy) 2 KM away from the home farm to allow for more combined land to support each of the families long term. The new dairy features a used D-12 WestfaliaSurge parallel parlour with a subway, biolynk flush system for the holding area, Jourdain stabling, GEA manure equipment and ACME panel fans.

Today Linda (29) works at RBC and is engaged to Ian, who has an agricultural manufacturing business. They are set to be married in June 2020. Bianca (26) is an RN at St. Mary's General Hospital in Kitchener, and her fiancé, Maik breeds cows part time. Bianca and Maik's wedding is fast approaching, and will take place this month! Jeroen (23) works at Scotiabank and his girlfriend, Caleigh works at RBC. The plans for the Slits family are for Bianca and Maik to own and operate Sandy Peaks Dairy, and Jeroen and Caleigh to take over Slits Dairy.



**We're Social Too**



**Tradeshow Season**  
dairylane.ca/tradeshows

**DLS Is Hiring**  
dairylane.ca/careers

## EMPLOYEE ANNOUNCEMENTS

DLS is pleased to welcome the following people to the Dairy Lane team:



**Blake Malott**  
Gas Technician



**Alex Murphy**  
Stabling Installation  
& Service Technician



## Microsoft is ending support for Windows 7?

Windows 7 was initially released in 2009 and has been one of the most popular versions of Windows ever released. Even though there has been two versions of Windows that have been released after Windows 7, Microsoft has continued to support Windows 7.

Unfortunately, Microsoft announced that they are no longer going to be releasing security updates to Windows 7. This could have negative impacts on computers around your farm as there will be no security patches released, leaving your computer potentially open to hackers and viruses. Microsoft is recommending users to upgrade to the latest version of Windows, Windows 10.

**This change takes effect on January 14, 2020.**

DLS can help with updating your computer to Windows 10 to ensure the safety and security of your computer. If you have computers currently running Windows 7 and would like to ensure the security of your devices is maintained, give DLS a call and ask for Marlon.

Visit [go.dairylane.ca/windows7](https://go.dairylane.ca/windows7) for more information about Microsoft's decision to end support for Windows 7.

## EMPLOYEE SPOTLIGHT



**Jake Rath**  
Supervisor - Weld/Fab Shop  
Joined DLS November 2011

Jake will be with the company for 8 years this fall. He was hired as a welder for the fab shop which at that time consisted of two people. When he started he worked mostly on manure equipment and biogas plants for the first 3 years. He was promoted to the Weld/Fab Shop supervisor about 3 years ago.

Prior to coming to work at DLS, Jake worked as a Welder/Fabricator at Mossley Glen, and prior to that he was an Equipment Operator at Glan-R-Vest Custom Harvesting combining peas and beans (cash crops).

Jake is an outdoor guy, his interests include hockey, firearms, hunting, BBQing and making homemade wine. All the DLS employees know Jake can smoke a wicked pig!

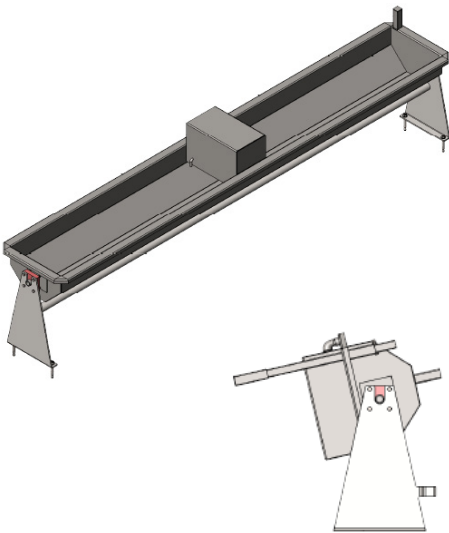
Jake has an aspiration to purchase a boat at some point to add to his toy collection. He is looking forward to the completion of the new weld/fabrication shop and growing the team and business through the work they do.



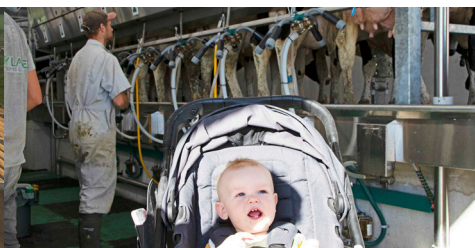
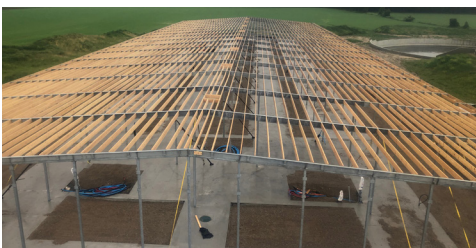
# JUNE'S product of the month

Our in-house fabrication team fabricates our line of stainless steel (Grade 304) DLS tip troughs. Fabricated with 11 gauge steel, they are as heavy duty as they come. They can be both wall or floor mounted and are available in 9 different lengths from 4' to 12'. The inside trough dimensions are 16" wide by 10" deep. Tipping them is fast and easy and the refill time is quick!

Each trough comes with a Jobe float. The float operates a small pilot valve which in turn operates the main diaphragm valve. It has a high flow rate, 50 GPM at 30 PSI. It's compact, robust and non-corrosive. The full specs on this float can be viewed @ [go.dairylane.ca/jobefloat](http://go.dairylane.ca/jobefloat)



## JOB PROGRESSION HIGHLIGHTS



### 1 Grassy Lea Farms Woodstock, ON

Grassy Lea Farms will be a tunnel ventilated robot barn. It will be our first DLS Structure to be used with milking robots. The structure was erected in one day and purlins were installed throughout the next 4 days. It's ready for steel! Check-out the time lapse with the structure going up @ [go.dairylane.ca/grassylea](http://go.dairylane.ca/grassylea)

### 2 Frontier Holsteins Clinton, ON

Frontier Holsteins started up on June 27. They formerly milked in tie stalls and transitioned to a new DLS / GEA D-8 parallel parlour & 4-row dairy barn! The barn is deep bedded with shavings (sand base underneath), and has Jourdain stabling, DLS tip troughs, ACME panel fans, and GEA manure equipment.

### 3 Kenvalley Farms Parkhill, ON

The cows moved into their new 6-row perimeter feed robot barn at Kenvalley Farms. The barn features Jourdain stabling with the waved neck rail and autolock gates, ACME panel fans, and DLS tip troughs. The stalls are deep bedded with ground corn stalks.

## BREAKFAST ON THE FARM



DLS was privileged to take part in the Breakfast on the Farm event held at Jobin Farms on June 22, 2019.

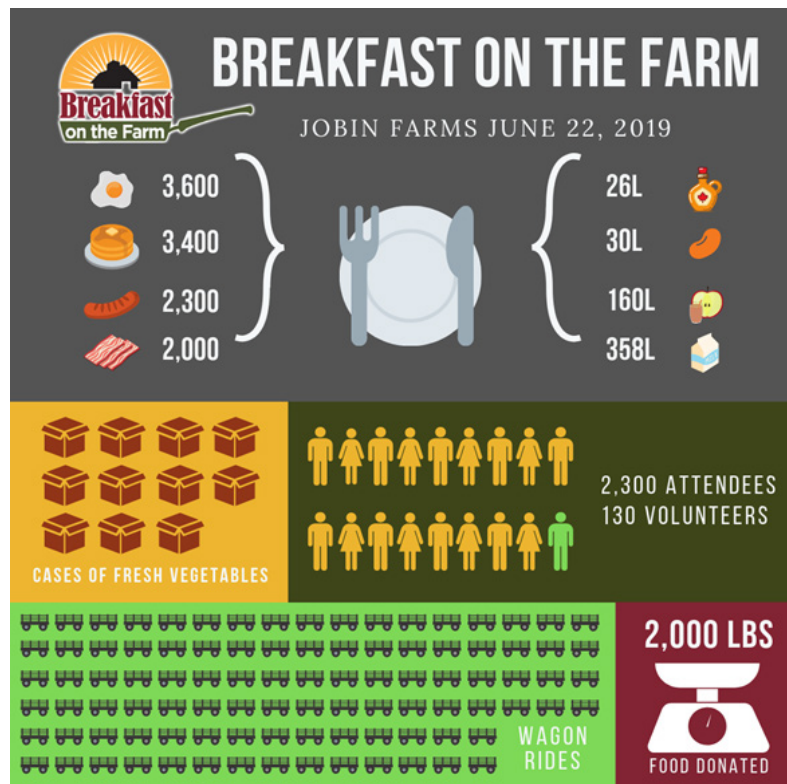
Although the state of the art barn looks beautiful now, things haven't always looked so polished at Jobin Farms. A devastating fire in April of 2016 destroyed their previous barn. Family and other farmers were able to save about 140 animals from the fire, but about 100 cattle lost their lives in the fire.

After the fire, the Jobin family had a decision to make – would they quit or choose to rebuild. We had the pleasure of working with them on their decision to rebuild and their new barn started up in the fall of 2017.

Over 2,000 people toured Jobin Farms during Farm and Food Care's Breakfast on the Farm event. To the right you will see an infographic that visually expresses just how much food was served at the event. All of the food that was eaten at the Breakfast on the Farm event was donated by local farms! It was an incredible turnout!

The purpose of the Breakfast on the Farm event is to show the public where their food originates from. "It doesn't come out of the store. It doesn't come off the shelf," Lyle Hall, president of the Essex County Federation of Agriculture commented. "We are the people behind the food that you eat that's very reasonably priced compared to other places of the world."

DLS would like to extend a big congratulations to the Jobin family for their determination to continue in the dairy business and for acting on their passion for dairy by hosting an event like this that educated so many consumers.



### FEATURED TWEET



**Christian Droefke**

June 19, 2019 at 5:10 PM

Night #1 with the @dairylanesystem parallel parlour retrofit fronts, really reinforced the notion that cows hate change. Ironically, the fresh heifer was the only one I didn't have to push in, like a fresh heifer.



6403 Egremont Dr.  
Komoka, ON  
N0L 1R0

(519) 666-1404  
info@dairylane.ca  
www.dairylane.ca

