



Advanced Animal Identification and Herd Management Systems

Fully integrated information to
better manage your dairy



engineering for
a better world

gea.com

Dairy Management System 21

Precision herd management for today's progressive dairy producers

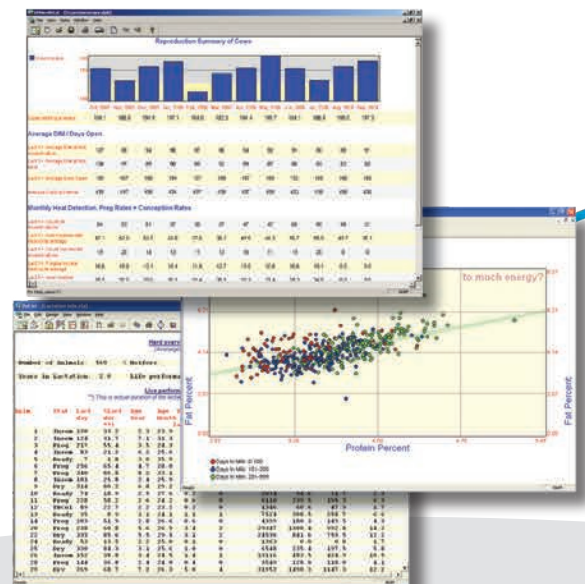
Today, anyone who wants to produce milk successfully must have a firm grasp of all the critical factors impacting dairy profitability. All relevant information must be readily available for quick and easy monitoring so that important decisions can be made and implemented at the right time. The GEA Dairy Management System 21 delivers 21st century technology and is your dependable partner in establishing and maintaining a successful herd — today and well into the future.

With electronic animal ID, Dairy Management System 21 works with our herd management software, DairyPlan C21, and records production, reproduction and herd health data automatically. Details of milk quantity, conductivity, weight and activity measurement then provide important information for optimal herd management.

Metatron Select 21
Metatron Premium 21



Cow/Herd Statistics



Sort Gates



Veterinarian

Nutritionist

GEA Dealer

Monitor and control parlor systems
as you manage your whole herd

Dairy Producer



DeMax and
DemaTron
Family



Activity Monitoring



Cow ID System



DairyFeed j-V600 and
J-V640 Calf Feeders

Reliable animal identification systems

ID systems to fit any parlor configuration

Meets ISO standards — identification systems from GEA are designed to enhance individual animal management. They are compatible with individual and portal ID systems. The Ear Tag ID system recognizes all types of ISO-compliant* (11784 and 11785) ear tags for optimum individual animal identification and management.

Easily integrated into any parlor type — both Responders and Ear Tag ID are well-suited for any parlor configuration.

** Performance of ISO ear tags may vary by type and brand.*

Compatible with AutoSelect sort systems — when sort systems are included, the Responders and Ear Tag ID components make individual animal management complete and easy.

Ear Tag Panel Reader — identifies cows wearing the GEA Ear Tag Responder and all types of full- or half-duplex ear tags. Readers can be mounted at the parlor entrance, the feeding area or within the sort gate system.



GEA Ear Tag Responder



GEA Ear Tag Panel Reader

Ethernet Per Place Ear Tag ID System (EPPID)

For the most accurate ear tag identification

EPPID antenna mounted to every stall — a missed stall does not affect the placement of any other cow, providing the highest rate of accuracy. In fact, EPPID is the most accurate system on the market.

EPPID reads HDX and FDX tags — allows different tags to be used on a single farm for increased flexibility.

Small antenna profile mounted close to the ear — provides a higher read percentage. Plus, the smaller antenna is less susceptible to electrical interference, compared to larger panel antennas.

Durable epoxy-dipped antenna — protects the components from moisture for long-lasting performance.



EPPID mounted on parallel parlor stall



EPPID mounted on rotary parlor stall

Accurate activity monitoring

Automatically manage heat detection with the Rescounter III

Proper heat detection leads to improved pregnancy rates and reproductive performance, along with greater long-term profitability. With DairyPlan C21 and the Rescounter III, GEA has made a proven, trusted heat detection system even better

More accurate heat detection — the Rescounter III records cow activity based on a more accurate two-hour activity interval.

This provides continuous data for reliable, 24-hour heat detection capabilities.

Stand-alone or fully integrated options — provides activity monitoring solutions to meet any dairy operation's needs — inside or outside of the parlor.

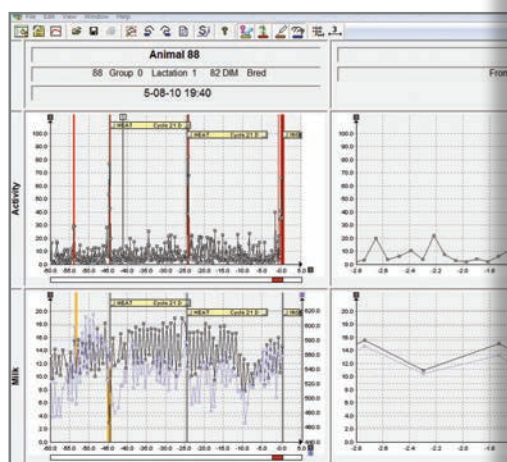
Customized settings — alarm levels can be customized for individual dairies, whether your cows are on pasture or in freestalls.

Low activity alarm — the system can automatically alert the herdsman when a cow's individual activity drops below her normal levels. This quickly identifies potential sick cows 12 to 24 hours before typical visible signs are present.

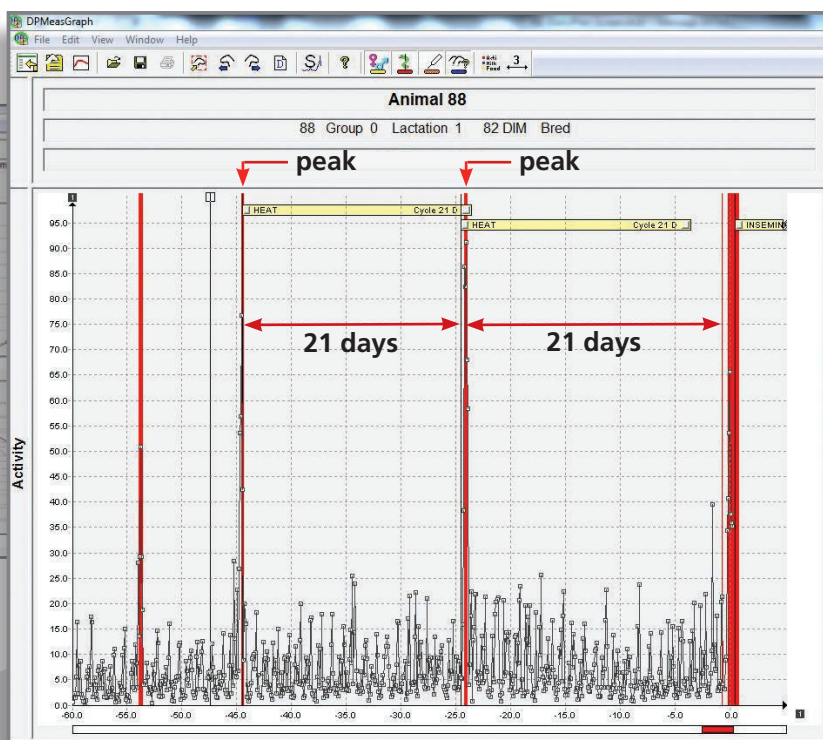
New, longer life battery — improves performance.

Reproduction management advantages

- Improved pregnancy rates
- Lower insemination costs
- Shorter intervals between calving
- Reduced days in milk
- Lower cull rates
- Reduced drug and labor costs



Analysis of historical and current activity, milk yield and conductivity curves are all visible at a single glance!

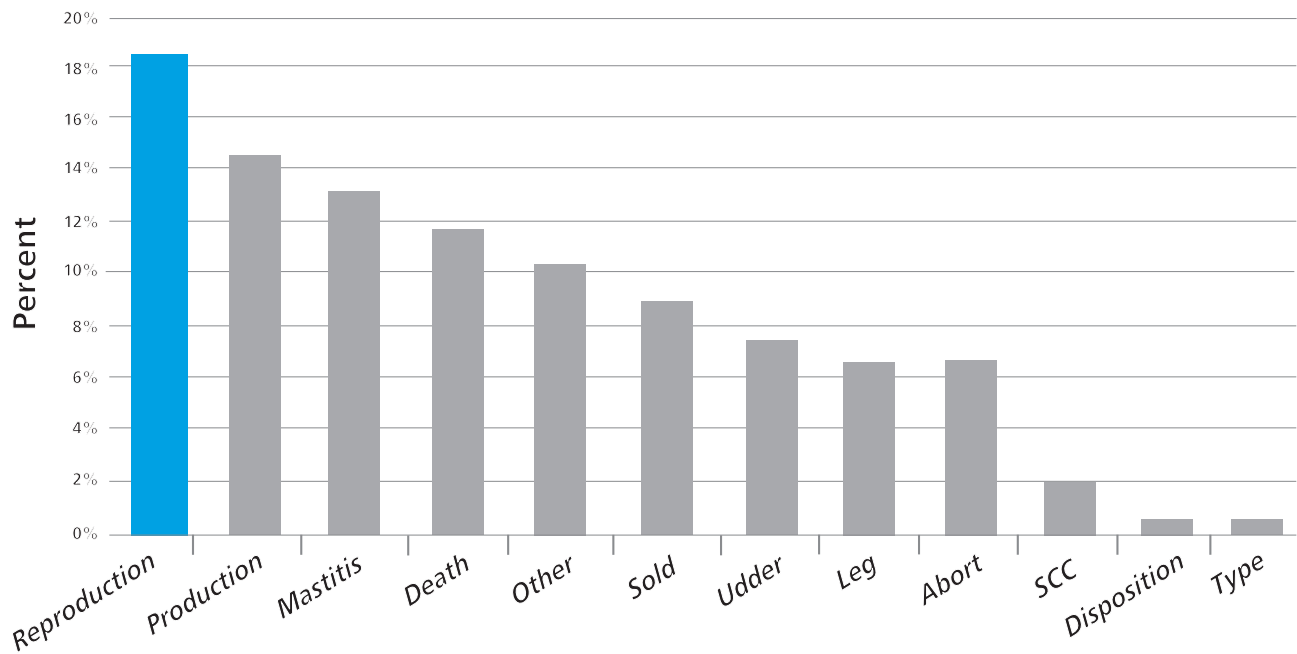


21 day breeding cycles are easily monitored on DairyPlan C21 reports.

Why monitor activity?

Reproduction is the No. 1 reason for culling cows on today's dairies

Culling Reasons



Advanced Reproduction Management

Monitor youngstock prior to milking herd integration

Heifers bred on time — activity monitoring on heifers provides more accurate reproductive performance.

Rescounter II+ tracks more than a 24-hour time period — if a cow or heifer is identified only once per day, producers will be able to follow-up on the entire activity of the animal for the whole day.

Money savings — drug and labor costs are reduced with fewer timed breedings.

Stand alone automatic heat detection — reliable detection of estrus for replacement heifers.



The Rescounter III is available in a leg or a neck version.



AutoSelect — quick, reliable animal sorting

GEA offers three ways to quickly and efficiently separate individual cows or groups, saving time and labor

You've equipped your cows with responders or ear tags, and the parlor with readers to collect individual cow data – now, get the full benefits of individual cow management with an AutoSelect sort system.

AutoSelect 5000

The AutoSelect 5000 is the ultimate dairy sorting system that provides customized sorting for individual cows as well as groups of cows. With minimal interruption, you can control up to five different directions.

Minimized cow flow interruption — ID antennas are positioned well before cows reach the sort system so that only cows that need to be sorted are stopped, ensuring optimum cow flow rates.

Guaranteed accuracy — photoeyes are incorporated into this system to watch animal movements, ensuring very high accuracy.

Data connection to Dairy Management System 21 — allows you to use either DairyPlan C21 or the milk meter to control your sort gate. Endless user formulas are available for sort criteria.

Utilizes two ID antennas — ensures confirmation of sort.

Over 3,000 AutoSelect 5000 systems have been installed worldwide. This sort system is the true market leader!

AutoSelect 5000



AutoSelect 3000

The AutoSelect 3000 provides automated control for individual cows and fully-automated individual cow sorting with up to three sort directions and data connection to Dairy Management System 21.

Minimized cow flow interruption — electronic sensors ensure efficient cow movement through the sort area.

Fully automated — for easy management.

Data connection to Dairy Management System 21 — use either DairyPlan C21 or the milk meter to control your sort gate.

Accurate — stops cows from entering the sort gate until chosen cow is segregated.



AutoSelect 3000

AutoSelect 3000SA

AutoSelect 3000SA is a stand alone individual sort system, the first step toward automated cow sorting with up to three sort directions.

Easy to use — no computer required.

Economic — automate your sort process at a low cost.

Manual attachment of temporary leg responders — can be easily removed and reused after treatment.

Easily upgraded — this system can be easily upgraded to AutoSelect 3000 by connecting to DairyPlan C21.



AutoSelect 3000SA

Feature	AutoSelect 5000	AutoSelect 3000	AutoSelect 3000SA
Works as stand alone without a PC			X
Sort gates stay in sort direction until an animal with a different criteria is identified	X		
Sort single animals for treatment	X	X	X
Combination sort by group and/or treatment	X	X	X



We live our values.

Excellence • Passion • Integrity • Responsibility • GEA-versity

GEA Group is a global engineering company with multi-billion euro sales and operations in more than 50 countries. Founded in 1881, the company is one of the largest providers of innovative equipment and process technology. GEA Group is listed in the STOXX® Europe 600 Index.

GEA North America

GEA Farm Technologies, Inc.

1880 Country Farm Drive, Naperville, IL 60563

Toll Free: 1.877.WS.DAIRY or 1.877.973.2479

GEA Farm Technologies Canada Inc.

4591 boulevard St-Joseph, Drummondville, QC J2A 0C6

Toll Free: 1.877.WS.DAIRY or 1.877.973.2479

gea.com